

公司簡介

聯穎科技股份有限公司

PRESENTED BY COPARTNER TECHNOLOGY CORPORATION



CONTENTS

03

History

04

About

05

Organization

06

Footprint

07

Group

08

Production

09

Assembly

10

Laboratory

11

Certificates

12

Customers

13

International Team

15

Machine Vision

17

Industry

19

Automotive

21

Communication

23

Medical

25

Raw Cable

27

Custom Cable

HISTORY

1987

Founding

Cablex Wire & Cable in Taipei

1991

Certified

acquired UL certification

1993

Expansion

established Copartner **Shenzhen**

2004

Rebrand

Copartner Tech Corp.

2010

Listing

on TW Stock Exchange (3550)

2021

Expansion

Jiangxi & Dongtai **CH** & Shulin **TW**

2023

Expansion

Rayong **Thailand**

ABOUT



28

Million \$
Capital



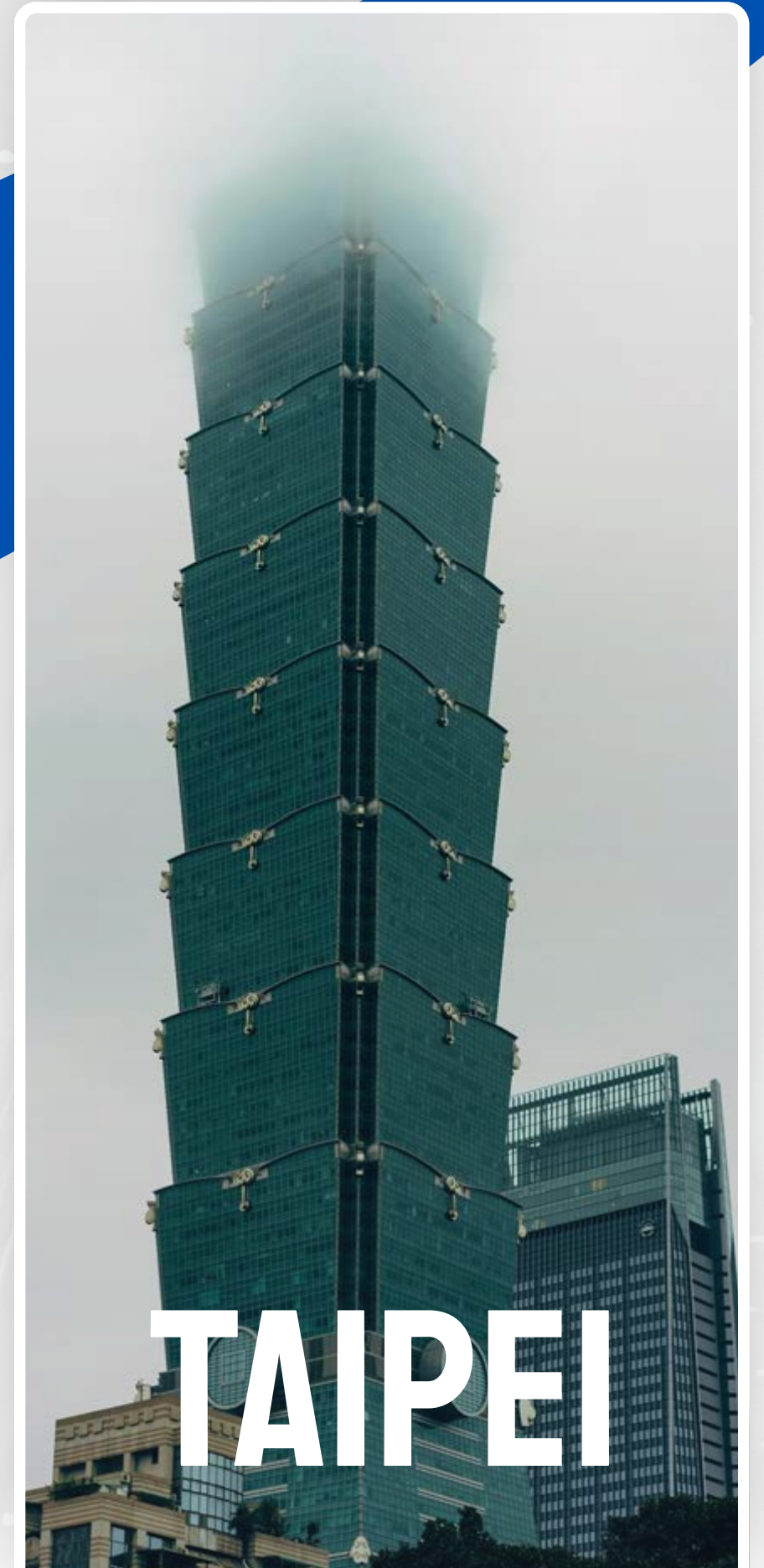
1500

Members



130


Million \$
Revenue
2023



TAIPEI

Headquarter

ORGANIZATION




PLASTIC AND COPPER WIRE

- Shenzhen Calex Wire
- Calex Metal Jiangxi
- WanFu Plastics Shenzhen
- HuiSheng Plastics Shenzhen
- Wujiang Wanfeng Plastics Cement
- Jia Xin Plastics (Shenzhen)
- Jia Xin Plastics (Jiangxi)



CABLE

- Copartner Shenzhen
- Copartner Jiangxi
- Copartner DongTai
- United Electrical Wire (Kunshan)
- Copartner DongGuan
- Copartner Technolgy Shenzhen
- Shin Ya Wire And Cable (Shenzhen)
- Shenzhen Copartner Communication(Shenzhen)



CABLE ASSEMBLY

- Calex Wire And Cable (Kunshan)
- Copartner Thailand

FOOTPRINT



CHINA

SHENZHEN



CHINA

KUNSHAN



CHINA

JIAXING

DONGTAI

WUJIANG



TAIWAN

TAIPEI



THAILAND

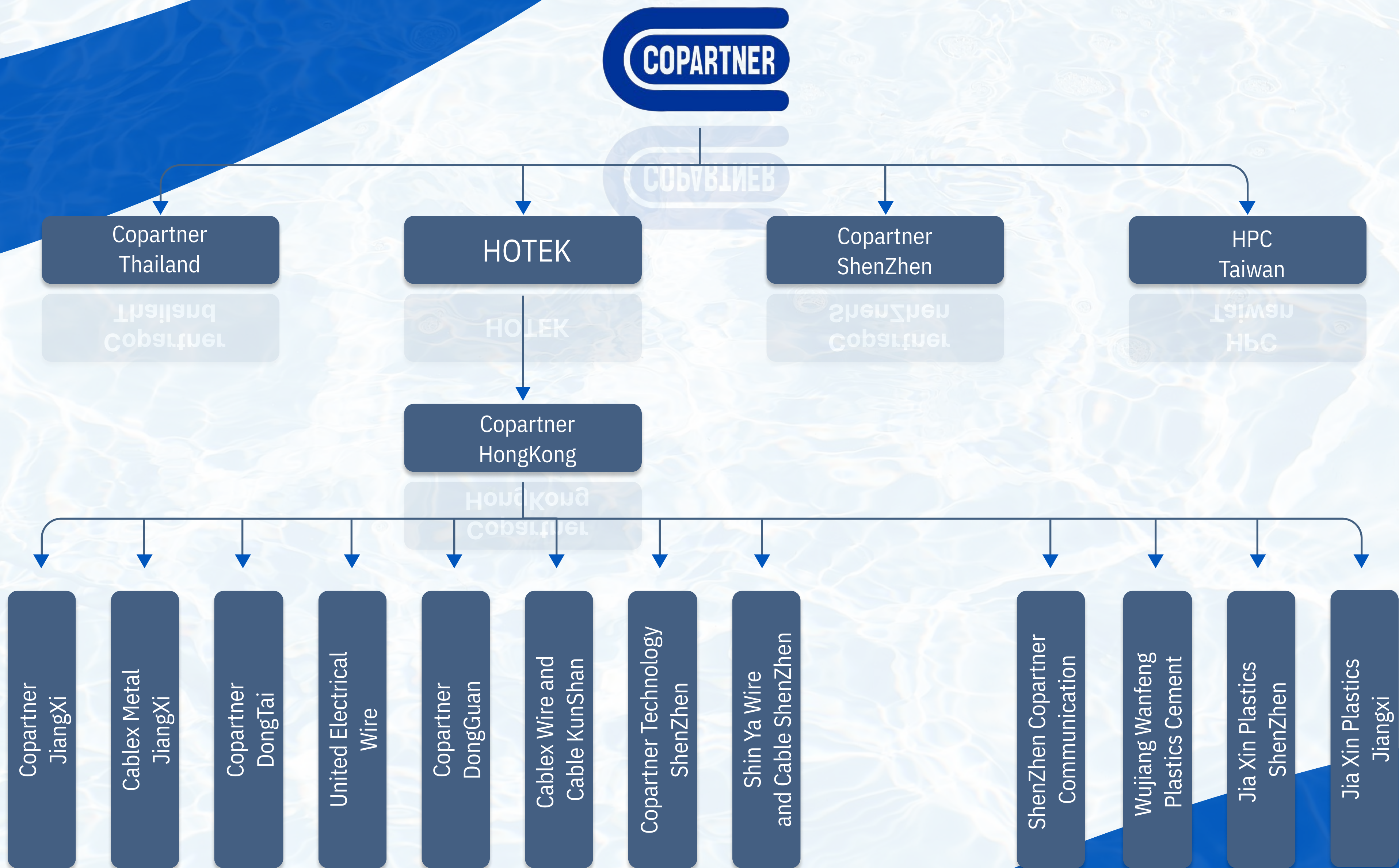
RAYONG



POLAND

POZNAN

GROUP



PRODUCTION



Planetary

Stranding



Braiding

Machine



Copper

Drawing



Gas

Injection

ASSEMBLY



Auto

Crimping



Pin

Inspection



Hot Bar

Welding



Coaxial

Stripper

LABORATORY



TDR



Network Analyzer



Torsion Tester



Bending Tester



Tensile Tester



Crimp Analyzer



Aging Tester



Aging Tester



Flame Tester



U Flex Tester



RoHs XRF Tester



Salt Spray Tester

CERTIFICATES



Sony Green Partner; 2021



IECQ; 2022



ISO 14001; 2015



ISO 13485; 2016



ISO 9001; 2015



IATF 16949; 2016

CUSTOMERS

ROBOT

GARZ  FRICKE **BIZERBA**  IDEMIA

AUTOMOTIVE

 **MEDHA** **Amphenol** **DENSO** **Delphi**
 **Kimball** Electronics  **Benchmark** **Rosenberger**
MITAC   **ECCO**  **TE** connectivity

INDUSTRIAL CONTROL

 **DELTA** **PRINTRONIX** **ADVANTEST**
 **legrand**  **BR**  **ODU**

EMS

 **Celestica** **flex** **JABIL** **FCi**

MEDICAL

SINBON  **Laerdal**
helping save lives

INTERNATIONAL TEAM



FRANCE



GERMANY



POLAND



JAPAN

SERVICES

INDUSTRY



COMMUNICATION



AUTOMOTIVE



MEDICAL



The background of the slide is a composite image. On the left, there is a vertical strip showing a close-up of industrial robotic arms in a factory setting. The rest of the background is a stylized illustration of a bright yellow robotic arm, similar to a KUKA model, positioned against a light blue sky with white clouds. The arm is shown from the elbow down to the gripper. The gripper is a black and silver mechanical device. The arm is positioned as if it is about to pick up or place something. The overall color scheme is dominated by the yellow of the robot and the blue of the sky and water reflection at the bottom.

INDUSTRY

COPARTNER PROVIDES VARIOUS CABLE SOLUTION FOR FOUR THE CORE APPLICATIONS OF INDUSTRIAL AUTOMATION: **ROBOTS, MOTORS, ENCODERS, AND CONTROLLERS.** OUR PRODUCTS CAN OVERCOME DIFFERENT KINDS OF HARSH ENVIRONMENTAL TEST. IN ADDITION WE SERVE CUSTOMIZED PRODUCTION FOR A VARIETY OF EQUIPMENT WITH SMALL QUANTITY TO FULFILL OUR CUSTOMER'S DEMANDS.



Servo Motor Encoder Cable

- Temperature Rating: -30°C to 105°C
- Voltage Rating: 30V
- Conductor Resistance: 1Ω max
- Insulation Resistance : 20 MΩ min



Encoder Cable

- Temperature Rating: -30°C to 105°C
- Voltage Rating: 30V
- Conductor Resistance: 1Ω max
- Insulation Resistance : 100 MΩ min



Servo Motor Encoder Cable

- Temperature Rating: -30°C to 105°C
- Voltage Rating: 30V
- Conductor Resistance: 1Ω max
- Insulation Resistance : 20 MΩ min



Industrial Robot Arm

- Uses TE connectors
- Terminal crimping meets compression ratio of 15% to 20%, vacuum ratio <2%
- Terminal pull force meets UL-486A standards
- Temperature rating: -40°C to 105°C
- Voltage resistance: 300V



Industrial Robot Arm Power

- 10 million times drag chain, torsion, swing
- Terminal crimping meets compression ratio 15%~20%, vacuum ratio <2%
- Terminal pull force meets UL-486A
- Temperature rating: -40°C to 105°C
- Voltage resistance: 300V



Industrial Robot Arm Control Box

- Shielded with ferrite core, using TE connectors
- Test voltage: DC 300V
- Insulation Resistance : 100 MΩ / min
- Conductor Resistance: 1Ω / max
- Temperature rating: -40°C to 105°C



Industrial Robot Arm

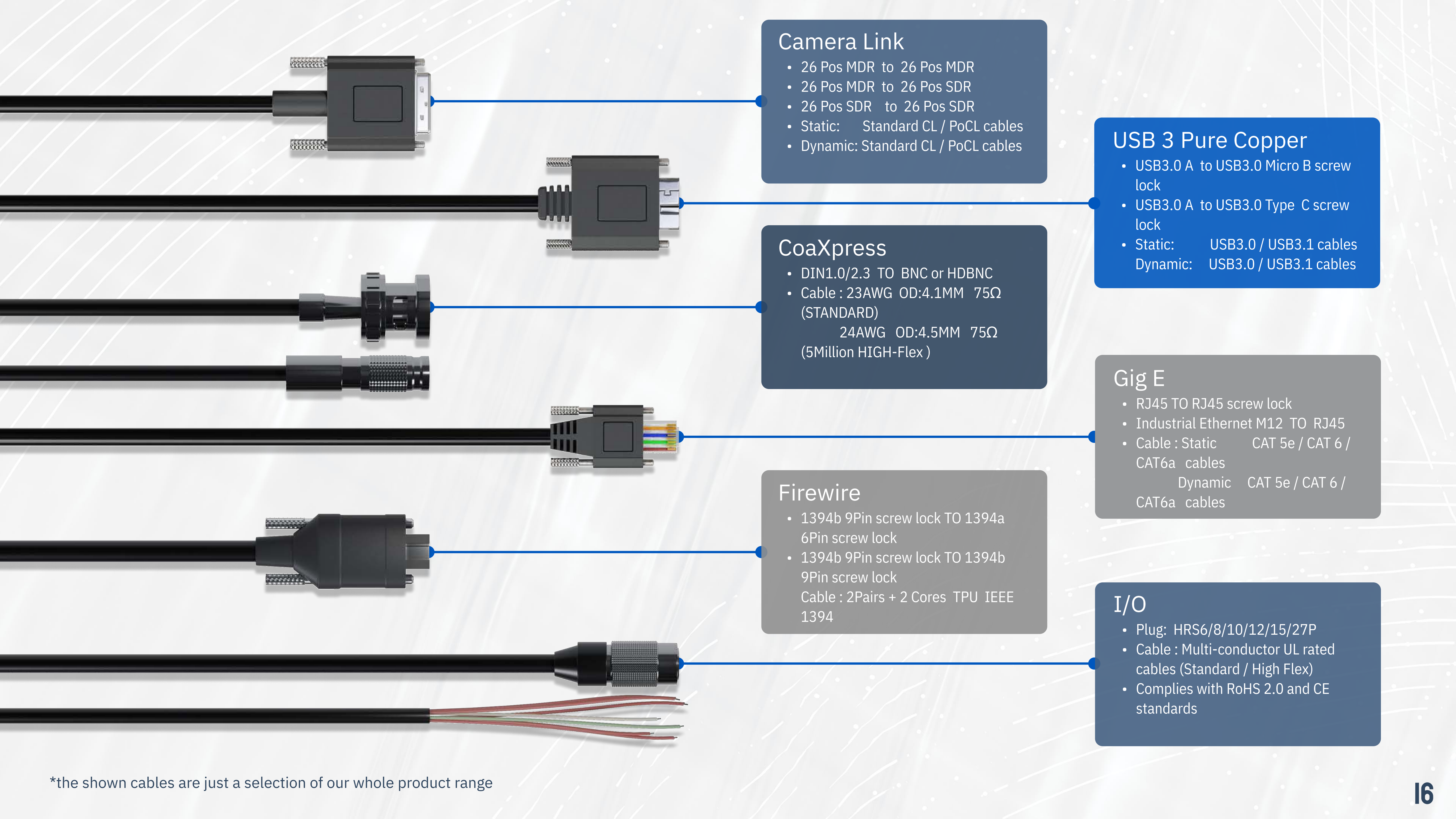
- Uses TE connectors, ensuring quality
- Terminal crimping meets compression ratio of 15% to 20%, vacuum ratio <2%
- Terminal pull force meets UL-486A standards
- Temperature rating: -40°C to 105°C
- Voltage resistance: 300V

*the shown cables are just a selection of our whole product range

MACHINE VISION

COPARTNER PROVIDES VARIOUS CABLE SOLUTIONS FOR THE CORE APPLICATIONS OF **INDUSTRIAL AUTOMATION**. OUR PRODUCTS ARE TESTED AND DESIGNED TO OVERCOME DIFFERENT KINDS OF **HARSH ENVIRONMENTS**. ADDITIONALLY WE PROVIDE **CUSTOMIZED PRODUCTION** FOR A VARIETY OF EQUIPMENT IN SMALL QUANTITIES.





Camera Link

- 26 Pos MDR to 26 Pos MDR
- 26 Pos MDR to 26 Pos SDR
- 26 Pos SDR to 26 Pos SDR
- Static: Standard CL / PoCL cables
- Dynamic: Standard CL / PoCL cables

USB 3 Pure Copper

- USB3.0 A to USB3.0 Micro B screw lock
- USB3.0 A to USB3.0 Type C screw lock
- Static: USB3.0 / USB3.1 cables
- Dynamic: USB3.0 / USB3.1 cables

CoaXpress

- DIN1.0/2.3 TO BNC or HDBNC
- Cable : 23AWG OD:4.1MM 75Ω (STANDARD)
24AWG OD:4.5MM 75Ω (5Million HIGH-Flex)

Gig E

- RJ45 TO RJ45 screw lock
- Industrial Ethernet M12 TO RJ45
- Cable : Static CAT 5e / CAT 6 / CAT6a cables
- Dynamic CAT 5e / CAT 6 / CAT6a cables

Firewire

- 1394b 9Pin screw lock TO 1394a 6Pin screw lock
- 1394b 9Pin screw lock TO 1394b 9Pin screw lock
- Cable : 2Pairs + 2 Cores TPU IEEE 1394

I/O

- Plug: HRS6/8/10/12/15/27P
- Cable : Multi-conductor UL rated cables (Standard / High Flex)
- Complies with RoHS 2.0 and CE standards

*the shown cables are just a selection of our whole product range

AUTOMOTIVE

**DUE TO THE INCREASING IMPLEMENTATION OF
ELECTRONIC DEVICES IN CARS, MULTIMEDIA
AND HIGH FREQUENCY PRODUCTS BECAME
STANDARD EQUIPMENT FOR WHICH COPARTNER
PROVIDES THE RIGHT SOLUTIONS**

**CELLULAR COMMUNICATION
WIFI & BLUETOOTH
CAMERA/ VISION SYSTEMS
VIDEO
REMOTE START
DSRC/ VEHICLE TO VEHICLE COMMUNICATION
REMOTE KEYLESS ENTRY
AM/ FM DIGITAL AUDIO
TIRE PRESSURE MONITORING**





Automotive Imaging Cable

- Insulation resistance: 35°C, 50% humidity, DC 300V/10MΩ, 60 seconds
- Voltage resistance: Insulation withstands 50Hz frequency, withstanding transverse waves of 550V (rms)
- Waterproofing guaranteed to IP67 level
- Endures 500 bending tests without damage



Automotive Imaging Cable

- Air tightness requirement: no air leakage under 2kgf/cm² pressure
- Harness pull force at the "rear cover" 10kgf
- Temperature rating: -40°C to 95°C
- Overall harness protection rating: GMW3072: specified IP68



Automotive Imaging Cable

- FAKRA SMA interface
- Waterproof rating meets IPX9K
- 360° rotation, withstands 1000 bending/min without damage
- Uses RG174 coaxial cable, low-loss dual shielding structure
- VSWR frequency: 0-1GHz
- Characteristic impedance: 50 ± 5 Ω
- Attenuation: ≤ -0.2dB @ 1GHz



Car Dash Cam Cable

- 100% Real-Device testing
- Endures 3000 bending tests
- Characteristic impedance: 90 Ω
- Voltage: 5V
- Insulation resistance: 20 MΩ min



Agricultural Machinery

- Test voltage: DC 300V
- Insulation Resistance : 20MΩ min
- Conductor Resistance: 1Ω max
- Waterproof rating meets IP67 standard
- Complies with QCT 29106 IPC-WHMA-A-620D specifications



Automotive Engine Cable

- Test voltage: DC 300V
- Insulation Resistance : 100 MΩ min
- Conductor Resistance: 1Ω max
- Temperature rating: -40°C to 125°C, withstands up to 150°C without damage
- Complies with IPC-WHMA-A-620D and USCAR 21 specifications
- Terminal crimping gap controlled within 3%

*the shown cables are just a selection of our whole product range

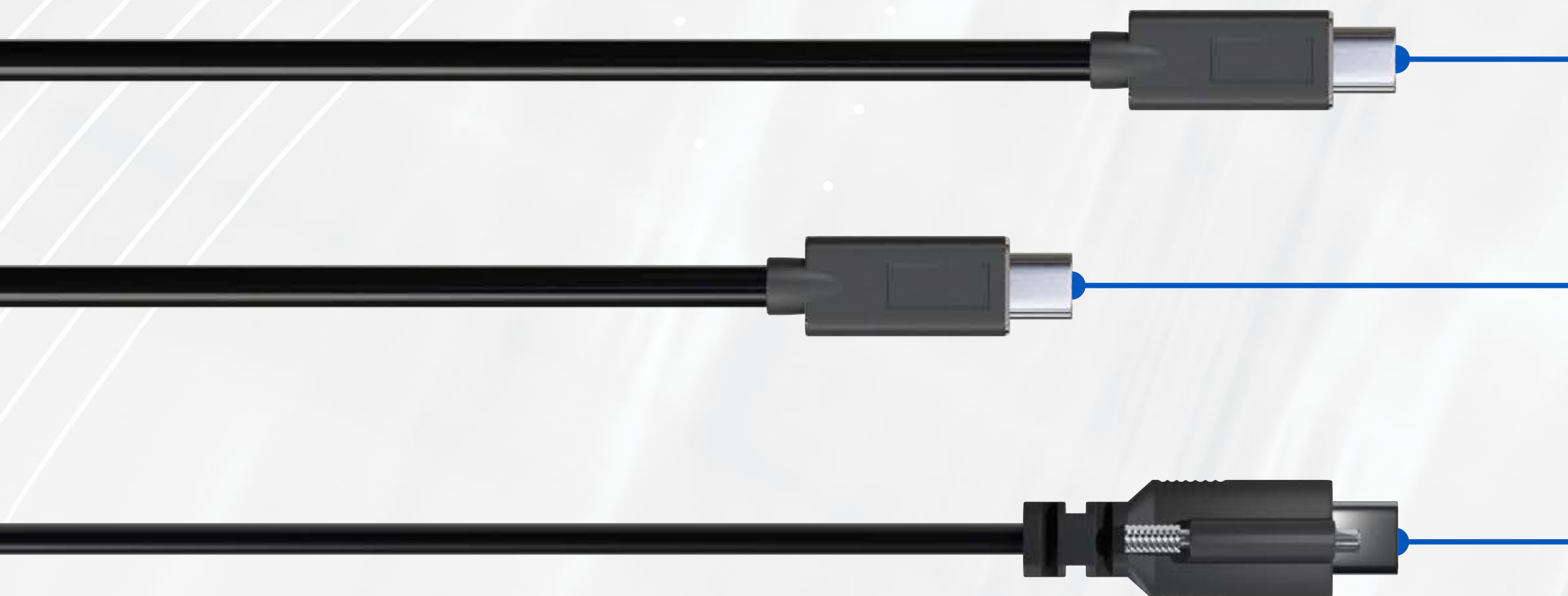
COMMUNICATION

FOR COMMONLY USED **COMMUNICATION PRODUCTS**, COPARTNER PROVIDES FULL SOLUTIONS FOR TYPE C AND WIRELESS BASE STATION CABLES, WHICH ARE DIFFERENT FROM GENERAL CONSUMER PRODUCTS. FOR ALL THESE WE ARE ABLE TO PROVIDE PROFESSIONAL AND CUSTOMIZED SERVICES.



HDMI 1.4/2.0/2.1 AOF

- Length: 1m ~ 15m
- 2.0/2.1 active optical fiber tech.
- plug and play, no driver required
- up to 4k@60Hz
- HDCP2.2
- no external power supply needed



USB Type C 2.0/3.1 Cable

- Length: up to 5m
- Transmission: 480Mbps ~ 5Gbps
- Current: 5A, 62W high power
- Single/ double-screw lock structure for stable transmission



Server Series

- Mini SAS Cable
- SATA Cable
- SFP
- QSFP



DB44P To GX12 4P*8

- Connect multiple cameras in DVR/ NVR systems
- One-to-many functionality
- Quick installation
- Compatible with products transmitting AHD/TVI/CVI signals



HSG to 5 Types of Conn.

- SR water proof IP 67
- RJ connector water proof IP67
- PoE function included
- IP camera application

*the shown cables are just a selection of our whole product range

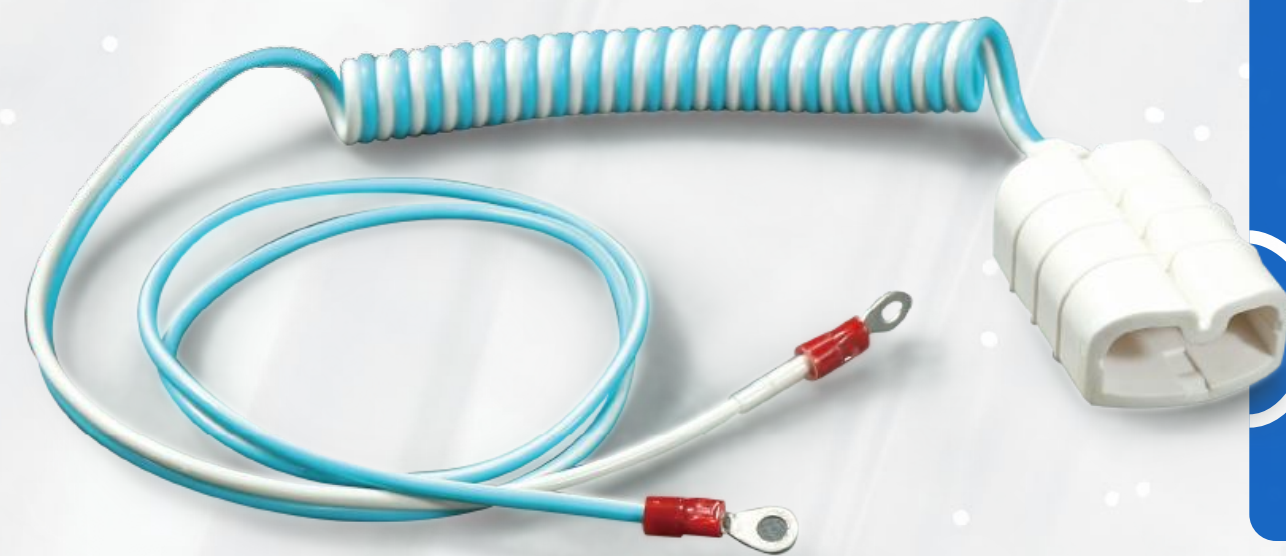
FROM **NON-INVASIVE** PERIPHERAL WIRES TO **MEDICAL EQUIPMENT** CABLES, COPARTNER SUPPORTS MEDICAL SOLUTIONS OF VARIOUS DIFFERENT DEVICES. TOGETHER WE FOR FOR THE FUTURE OF MEDICAL TECHNOLOGY AND IMPROVING LIVES.





Ophthalmic Imaging Cable

- Connector: HIROSE HR10A-7P-6S (73)
- Cable: Multi-strand copper conductor, double shielding for effective interference resistance
- One end connects to the ophthalmic control system, the other end connects to the cabinet system



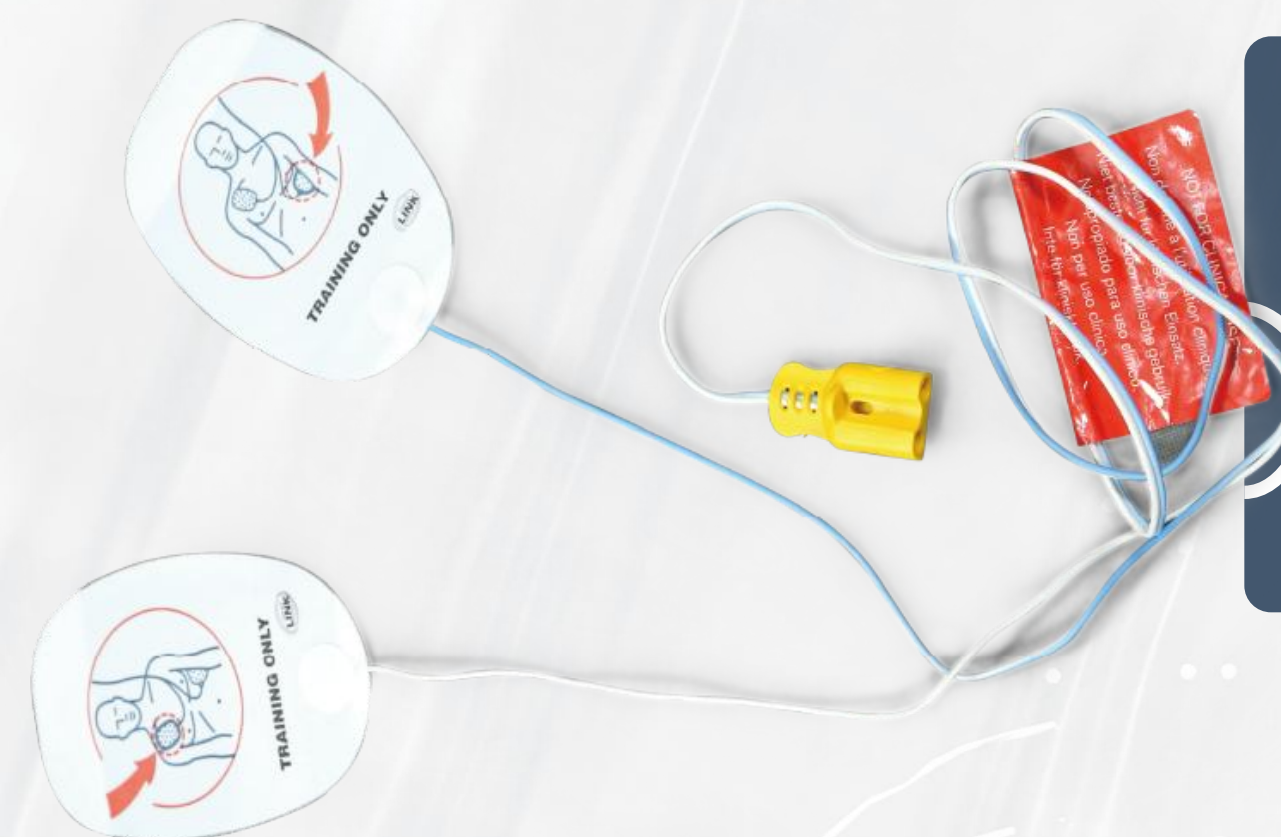
Medical Educational Equipment

- Voltage: DC 300V for 10 milliseconds
- Insulation Resistance: 20 mega Ω minimum
- Conductor Resistance: 3 Ω maximum
- Cable Material: flexible TPU
- Compliance: UL, RoHS, REACH standards



Urinary Tract Cable

- Voltage: DC 300V for 10 milliseconds
- Insulation resistance: 20 mega Ω minimum
- Conductive resistance: 3 Ω max
- Temperature rating: -40°C ~ 80°C
- Characteristic impedance: 90 Ω
- Compliance with UL RoHS REACH standards



Med. Ed. Electrode Pad Cable

- Voltage: DC 300V for 10 milliseconds
- Insulation Resistance: 20 mega Ω minimum
- Conductive Resistance: 1 Ω maximum
- Temperature rating: -40°C ~ 80°C
- Cable Material: flexible PVC
- Compliance: UL, RoHS, REACH standards



Electrocardiogram Lead Cable

- Pin-style pressure connection electrodes
- TPU coating
- ISO 10995-5 and ISO 10993-10 standards
- Bending: 15000 times; Wire tension: 20kg;
- Plug and pull: 10,000 times;
- Contact resistance: 0.1 Ω ;
- Conductive resistance: <1 Ω ;
- Insulation resistance: >100 M Ω ;
- Voltage withstand: >1000 VAC;



Medical Bed Cable

- Voltage: DC 300V for 10 milliseconds
- Insulation Resistance: 20 mega Ω minimum
- Conductive Resistance: 2 Ω maximum
- Temperature rating: -20°C ~ 80°C
- Compliant with UL RoHS REACH standards

*the shown cables are just a selection of our whole product range

RAW CABLE

THE ESSENTIAL THREADS FOR TRANSMISSIONS, STRIPPED OF CONNECTORS THESE RAW CABLES OFFER A SEAMLESS LINK FOR YOUR SPECIFIC CONNECTIVITY NEEDS WHETHER YOU NEED **CUSTOMIZED CONFIGURATIONS** OR ARE OPTING FOR **INDUSTRY STANDARDS**.



UL Rated Multi-Conductor

- Computer Cable
- Media Cable
- Control Cable



Industrial Cable

- Drag Chain/Torsion Cable
- Machine Vision Cable
- Motor/ Encoder/ Servo/ Sensor Cable
- Power Cable



Halogen free Cable

- LSZH/ TPE/ TPU/ TPV/ PEEK Cable



Active Optical Cable

- HDMI AOC Cable
- Display Port AOC Cable
- USB3.1 AOC/ Ethernet AOC Cable
- SFP/ QSFP AOC Cable



High Speed Transmission

- Coaxial/ Mini-SAS/ SATA Cable
- PCIE/ CXP/ SFP Cable



Fire Performance Cable

- CMG/ CMR/ CMP UL rated Cable
- Plenum PVC Cable
- FEP/ PFA/ PEEK Cable

*the shown cables are just a selection of our whole product range

CUSTOM CABLE

CUSTOM CABLES ARE USED WHEREVER AN OFF THE SHELF SOLUTION OR INDUSTRY STANDARDS SIMPLY WON'T SUFFICE. THEY ARE MANUFACTURED WITH A **SPECIFIC APPLICATION** IN MIND, UTILIZING **UNIQUE COMPONENTS** AND **DESIGNS** TO FULFILL THE DEMANDS OF A UNIQUE OPERATING ENVIRONMENT.





ENHANCED EFFICIENCY

Custom cables designed to fit your equipment specifications ensure **smoother** connections, **reducing downtime** and **enhancing** overall operational **efficiency**.



FLEXIBLE DESIGN

Benefit from a range of **customization choices**, including lengths, connectors, and shielding options, tailored to suit your specific applications, ensuring a **perfect fit** for your systems.



ASSURED RELIABILITY

Our cables undergo **rigorous testing**, guaranteeing durability and reliability in demanding business environments, **minimizing** maintenance and replacement **hassles**.



PERSONAL ASSISTANCE

Our team provides **personalized support**, guiding you through the customization process, ensuring your unique requirements are met **efficiently** and **effectively**.



CERTIFICATES

Safety

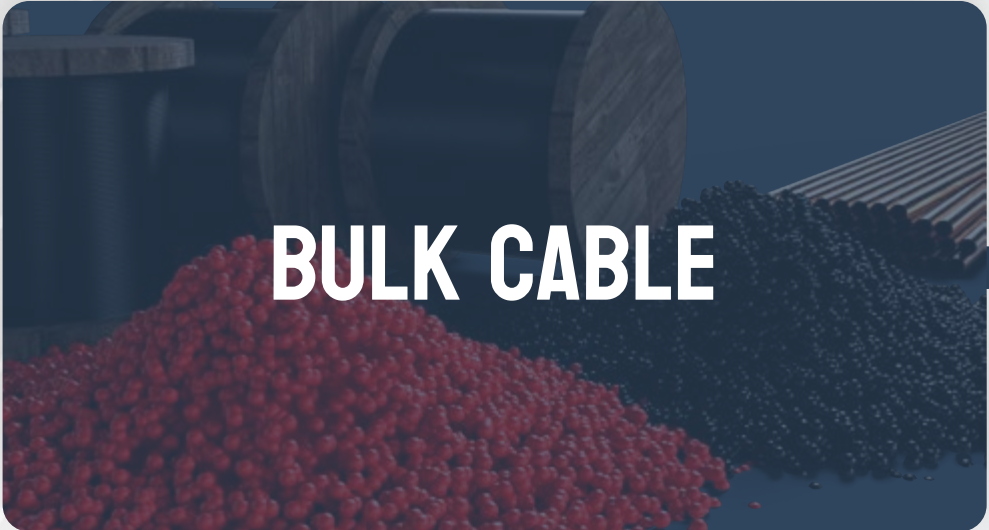
UL certified
ERL certified
CSA certified
JQA certified

Product

HDMI by HDMI ATC
USB by USB-IF
LAN by ETC
3P

System

ISO9001:2015
ISO14001:2015
ISO13485:2016
IATF 16949:2016



BULK CABLE

Conductor

Bare Copper
Tinned Copper
Silver plated copper
Silver plated copper cover steel
Alloy

Insulation

PVC / SR-PVC / XL-PE
FM-PE / PP / FM-PP TPE /
TPEE / PUR ETFE / FEP /
PFA/ PEEK

Shielding

Spiral
Braiding
Wrapping

Jacket

PVC / PE / XL-PE
TPE / TPV / TPU /
LSZH / FEP / PFA
PEEK

Features

Single wires /Multi conductor/
Twisted pairs / Flat, Ribbon,
Circle, Parallel shapes / Specified
Color / Kevlar / Special filler



HARNESS & ASSEMBLY

Capabilities

Design & Prototyping	Fabrication
Cable Cut & Strip	Tooling
Jacketing &	Casting
Moulding	Molding Part
Strain Relief	EMI/EMC
Assembly	Software
Stamping	R&D
Fabrication	Final Test

Process

Komax Full Auto Crimping Machine /
Stripped and Crimping / HOT-BAR Welding
Machine / TYPE3-1 Double Stripped
Machine / 4F Stripped Machine / Pin
Diagram inspection machine / Laser
Machine / Coaxial Cable Stripping Machine

Laboratories

TDR / Network Analyzer / Aging / Tensile /
Bending / Cold Bending / Drag Chain / EMC
Torsion / Salt Spray / Hi-Pot / ROHS XRF /
Flame Resistance and etc.

APPLICATIONS



High Frequency



Coiled Cables



Active Optical cables (AOC)



Medical(ISO13485)



AISG



Drag Chain



Robot



Media



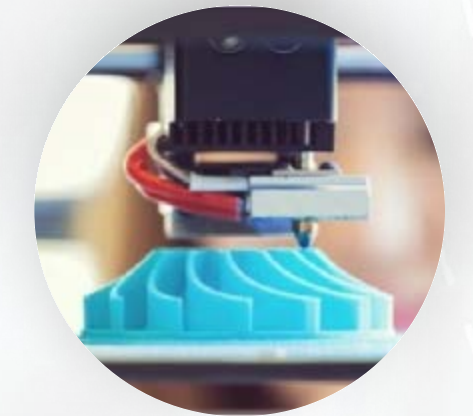
Gaming



Pipeline inspection



Marine (NMEA2000)



Sensor / Encoder



Motor



Machine Vision



Automotive Harness/ Assy



Energy Storages



Data Centre



IOT



Green Energy



Military/Defense



Automation/Process Control



Consumer Electronics



OEM



Aerospace

THANK YOU !
THANK YOU !